

SIM User Guide

Version 15/10/2020

This document describes SIM version 4.8X from October 2020, but may also apply to previous or later versions.

Smart Inventory Manager is regularly updated.

To learn more about our updates, please consult our website at <https://smart-inventory-manager.com>

This manual is available at <https://smart-inventory-manager.com/manual> and from SIM with the F1 key

INDEX

| | | |
|----|--|----|
| 1 | Introduction..... | 2 |
| 2 | Getting started | 3 |
| 3 | Product inventory tab..... | 7 |
| 4 | Barcode window | 10 |
| 5 | Suppliers | 12 |
| 6 | Logs tab..... | 14 |
| 7 | Label printer tab | 16 |
| 8 | Networking and user's management | 20 |
| 9 | Inventory Tab..... | 22 |
| 10 | Assemblies..... | 24 |
| 11 | Tools tab | 27 |
| 12 | Customize SIM | 31 |
| 13 | How to do | 32 |
| 14 | Advanced features..... | 34 |

1 Introduction

1.1 Efficient

SIM was developed for fast and easy implementation for all types of organization or activity. Our main focus is to provide our users with a simple but yet powerful inventory management solution that is user-friendly.

1.2 Robust

Unlike many inventory management solutions, SIM is not simply an option or addition to accounting or business management software suites. It is a tool for field employees working directly with inventory, who are interested in real time availability, monitoring and supply. Easy use and ergonomics take precedence over administrative and financial aspects.

1.3 Scalable

Built using Microsoft.Net standard and SQL database, SIM is an open and scalable software. Many variants exist, and all modifications and improvements that you probably need are already available or easily attainable. To ensure that SIM remains simple, its architecture is customizable: you only pay and see what is useful to you.

1.4 International

SIM is available in English, Spanish, and German, at no extra charge. You, yourself can translate the SIM text file, and adapt it to your country, culture, or even your practice. Sometimes the original French name GSM (Gestion de Stock Modulaire) may appear instead of SIM.

According to your country, to Windows and Microsoft Offices settings, you may have trouble with Excel files exchanges. Just call us and we will help you to configure SIM for your PC.

2 Getting started

2.1 Installation

The most outstanding attribute of SIM is that it is user-friendly. When installing SIM, it includes a directory that contains the necessary files in order for SIM to run on your PC. We recommend downloading the files from www.smart-inventory-manager.com

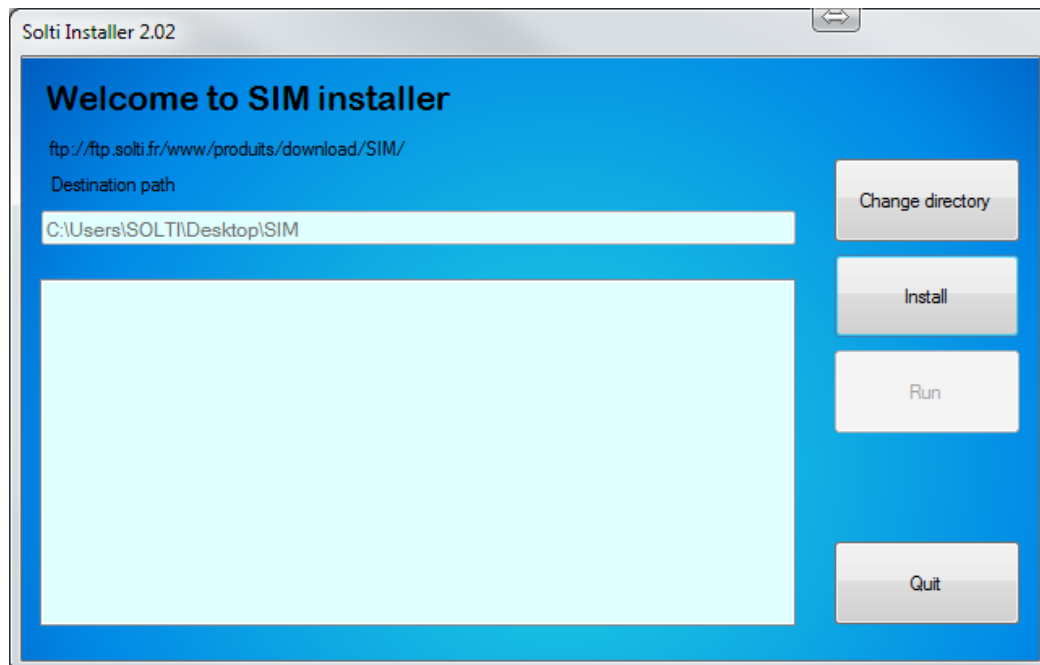
Download SIM for free

Note: SIM is completely virus free and poses no threat to your PC!

SIM also allows you to install SIM in a number of directories and cloud networks. For further help, please feel free to contact us for more information.

2.2 Automatic Installation

By installing this program, the files are copied from the SIM website into a directory of your choice on your PC, which by default is **Desktop/SIM**.



The “**Change directory**” button allows you to install it anywhere on your PC.

The “Install” button will perform the actual install. The “Launch” button will run SIM. You only need to create a shortcut on your desktop or taskbar.

2.3 ZIP Files

On our website, you will find a SIM.zip file to download. It is a compressed version of installation files for SIM. Step-by-step instructions for installing SIM is available on our website both as a video and as a pdf file, which you can easily [download](#).

2.4 User Interface

The user interface has 4 tabs. These tabs are presented like Microsoft Excel sheets.



Each tab contains a table called a “DataGrid” containing data.

2.5 Screen sections

In the upper left-hand corner, the tab selection corresponds to the work to be done

- The search boxes (or scroll lists), according to the tab selected
- The data display area
- The button which gives you several actions that can be executed on the selected line.

2.6 Record Selection

Each line of data is known as a ‘record’. Most actions are accessible by clicking on the button located to the left of each relevant line.

| | | | | | | |
|----|------------|-------|------------|----------|------|----|
| 11 | ELECTRI... | 10008 | 56/80A | LOCAL | 1 | 0 |
| 12 | ELECTRI... | 10009 | A2 | CODEQ... | 1 | 0 |
| 13 | BALL MILL | 10010 | 4.8MM | CAOTECH | 7703 | 15 |
| 14 | ELECTRI... | 10011 | | CODEQ... | 1 | 1 |
| 15 | ELECTRI... | 10012 | 110A 66... | LOCAL | 0 | 0 |

2.7 Right click

Like most Windows applications, a right click on a line opens a user menu. This enables triggering only one action at a time on the selected item. A list of possible actions is available on buttons to the right of the screen, which can be performed on several items at once.

| | | | | | | |
|----------|------|------|-------|-----|-----------|--------|
| LOCAL | 1 | 0 | 5 | PCS | 2B1 | 11,48 |
| CODEQ... | 1 | 0 | 5 | PCS | MR ENO... | 532,18 |
| CAOTECH | 7703 | 1500 | 10000 | KC | NEW ST... | 5 |
| CODEQ... | 1 | 1 | | | A4 | 826,68 |
| LOCAL | 0 | 0 | | | A4 | 0 |
| LOCAL | 0 | 0 | | | A4 | 8,31 |
| CODEQ... | 12 | 5 | | | A2 | 24,93 |
| CODEQ... | 6 | 3 | | | A7 | 10 |
| LOCAL | 0 | 0 | | | A7 | 6,74 |
| LOCAL | 4 | 2 | 5 | PCS | 6A4 | 9,49 |

- Add product
- Remove
- Edit
- Create a new product
- Print barcode
- Cancel

2.8 Column width

Each table column (the DataGrid or the grid) can be widened or narrowed by selecting the line that separates two column headers, and dragging it left or right. Double-clicking will set the column width to default width.

| Category | Reference | Description | Supplier | Quantity | Alar |
|------------|-----------|-------------|----------|----------|------|
| HILLER | 10004 | | GRADIUS | 14 | 3 |
| ELECTRI... | 10005 | 220V 50HZ | LOCAL | 1 | 0 |
| ELECTRI... | 10006 | 220V 50HZ | LOCAL | 0 | 0 |
| ALING... | 10007 | | LOCAL | 0 | 0 |

To save the column's width, you need to exit the screen with the 'quit' button: the next time you launch the application; the saved widths will be used.

2.9 Sorting Records

By default, data is sorted from oldest to newest. To change this order, simply click on the header of each column to sort it alphabetically from A to Z, or Z to A. This convenient feature is more accessible than using Excel.

| Description | Supplier | Location | | | |
|-------------|----------|----------|-------|------|------|
| on | Supplier | Quantity | Alarm | maxi | Unit |
| | LOCAL | 1140 | 50 | 100 | PCS |
| | LOCAL | 920 | 50 | 100 | PCS |
| | LOCAL | 700 | 100 | 300 | PCS |
| | LOCAL | 700 | 50 | 500 | PCS |
| | LOCAL | 512 | 150 | 600 | PCS |
| A | LOCAL | 435 | 50 | 100 | PCS |
| | LOCAL | 430 | 100 | 300 | PCS |
| Ormm | PROBAT | 320 | 160 | 320 | PCS |
| | PROBAT | 320 | 160 | 320 | PCS |
| | LOCAL | 300 | 0 | 300 | PCS |
| | PROBAT | 276 | 140 | 280 | PCS |
| A | LOCAL | 276 | 50 | 100 | PCS |

2.10 Searching Records

To facilitate working with large quantities of important data, the search box allows to display only records that match the selected criteria. For example, in order to search for all “MECHANICAL” type products, just type the word “MECA” in the Category box, and hit “Return” or the button on the right. Only the records from the category ‘mecaxxxx’ appear. You can search on any column. The search is not case sensitive. An option enables to combine criteria.

| ID | Category | Reference | Description | Supplier | Quar |
|-----|--------------------|-----------|-------------------|--------------|------|
| | MECHA | 564 | | BAUER | |
| 77 | BLOWER NIBS/SHE... | 10076 | | BAUERMEISTER | 13 |
| 112 | WINNOWER | 10115 | | BAUERMEISTER | 2 |
| 113 | WINNOWER | 10116 | | BAUERMEISTER | 2 |
| 167 | WINNOWER | 10172 | | BAUERMEISTER | 0 |
| 185 | MECHANICAL | 10191 | 45° / D 150 | BAUERMEISTER | 1 |
| 311 | MECHANICAL | 10374 | D 250 / L 2000... | BAUERMEISTER | 10 |
| 312 | MECHANICAL | 10375 | D200 / L2000m... | BAUERMEISTER | 5 |
| 313 | MECHANICAL | 10376 | L 490 / D 350 | BAUERMEISTER | 20 |
| 314 | MECHANICAL | 10377 | L 990 / D 350 | BAUERMEISTER | 4 |
| 426 | WINNOWER | 10527 | 50HZ / 860W | BAUERMEISTER | 2 |

To return to the display of all the records, just use the “refresh” button. It is possible to recall the last 10 searches performed, by clicking on the arrow of the search box. This more efficient than an alphabetical list!

| ID | Category | Reference |
|----|----------|-----------|
| | Hydro | 564 |
| | Hydro | |
| | electri | |
| 1 | CHILL | BARC |
| 2 | WINN | BARC |
| 3 | MECHA | |
| | CHILLER | 1000 |
| 4 | CHILLER | 1000 |

3 Product inventory tab

3.1 Display

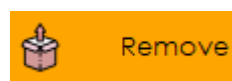
The first tab is for daily operations: Incoming and outgoing inventory products. The “products” are all objects that can be found in inventory which carry the same references. The first tab displays the quantity of each product and products with a warning.

3.2 Mouse click

When clicking on a line, a popup menu offers the following choices:

- Add product**
- Remove product**
- Edit**
- Create new product**
- Print barcode**
- Cancel**

Add and remove functions from the mouse right click moves only one reference at a time, Add and Remove buttons on the right side are used to move more than one reference at a time, and to print document.



3.3 Product tab buttons

| Button | Action |
|-----------|---|
| Help | Opens the user manual for SIM on a web browser. |
| Refresh | Refreshes the current view. |
| Export | Send displayed data to an Excel file. |
| Alarms | Shows only products with quantity under threshold |
| Barcode | Opens a dialog window for scanning labels |
| Batch | Optional button to read barcodes from remote devices (PDA, smartphones) |
| Add stock | Opens a dialog window to add products into stock |
| Remove | Opens a dialog window to remove products from stock |
| New | Creates a new product reference |
| Edit | Edits the selected line to alter a reference |
| Quit | Exits the application |

3.4 Export

One of the most useful buttons that you will find in most tables is the Export button. SIM can export data to many formats.

The CSV format exports the current displayed selection. CSV is the only possible format if you do Excel. CSV format may change according to your localization settings. A parameter IMPORT_CSV enables you to re-define the separator in case of a problem.

XLS and XLSX formats require Excel, and the export contains all the data base of products.

3.5 Product definition

Now let us see what “products” mean when using SIM. Here are the definitions of each product parameter:

| Field | Format | Description |
|-------------|---------|--|
| ID | Integer | Identifier. Each product has a unique identifier given automatically by the database system and It cannot be changed. In normal circumstances, you never need to change it. Usually, it is given in chronological order. |
| Category | String | To facilitate sorting, each product can have a category name associated. There are no pre-defined rules about how to choose a category name. No specific processing is done on category names because SIM uses ID and references. “Family” is sometimes use instead of category. |
| Reference | String | Each product has one reference. Each reference corresponds to only one product. This reference can be the bar code value or any unique string. Choosing a good naming convention is the key for great user experience. The reference is usually the barcode. It has to be unique. |
| Description | String | This field is not critical for the data base engine, you may store in this field any information needed by users. |
| Supplier | String | The supplier name is taken from the supplier table, which can be modified in the Suppliers’ tab. You don’t need to use this field. |
| Quantity | Decimal | The number of actual products of the same reference in stock. |
| Mini | Decimal | This is the minimum quantity you want to keep in stock at any time. When the real quantity is lower, the quantity will appear in red. Mini is specified when creating a new product. |
| Maxi | Decimal | Optional parameter. This is the maximum quantity you want to keep in stock. |
| Location | String | This field is not used by the system, you can write anything that will help users find or sort products. Location is specified when creating a new product. With WMS options, the use of location is more complex. |
| UnitBuy | Decimal | This field contains the unit cost of the product, when added to |

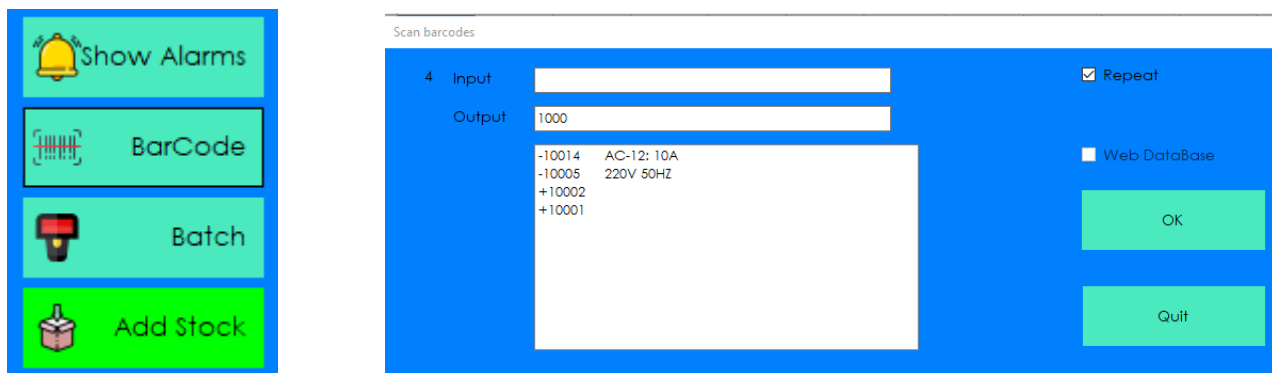
| | | |
|-----------|---------|--|
| | | stock. Buying costs in not required. You can also use the CUMP feature to make use of the average value of the actual stock. |
| TotalBuy | Decimal | This is the product of U-Buy by Quantity for a specified product. |
| UnitSell | Decimal | This field contains the unitary price of the product. Buying costs in SIM is not required. You can also use the CUMP feature to make use of the average value of the actual stock. |
| TotalSell | Decimal | This is the product of U-Sell and Quantity for a specified product. |

4 Barcode window

4.1 Principle

From the Product's tab, when you have the barcode reading option, you can press the **Barcode** button. It opens a window adapted to USB barcode scanning, or any radio or Bluetooth compatible reader. Simple barcode readers that functions like keyboard extensions are called HID (Human Interface Device). Sometimes you have to set the NumLock to read correct data from USB.

You have to move the mouse cursor to the Input or Output textbox.



When you scan a barcode, text will appear automatically. A return character has to be sent by the reader, otherwise you have to use the OK button.

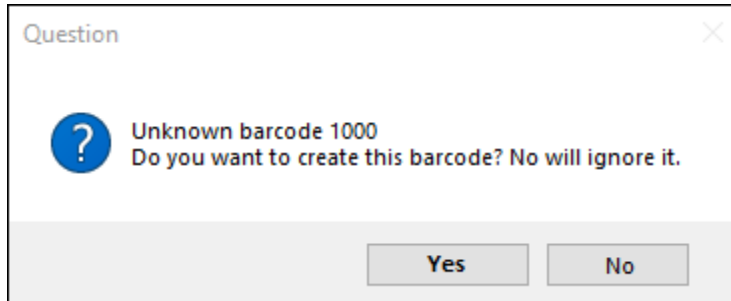
4.2 Scan modes

Each barcode scanned is displayed in the bottom window. Inputs are marked + and output –

The number of scans is indicated on the left.

When the repeat checkbox is unchecked, you have the opportunity to enter a quantity, a comment or any additional information.

When the barcode is not already defined in SIM as a reference, you can choose to create a new product or to ignore it.



☐ Web DataBase

This checkbox is an option to search the barcode description on the Web

5 Suppliers

5.1 Display

The suppliers' tab is used to keep track of supplier's information.

| Inventory Suppliers Logs Inventory Check Labels Carts Orders Tools | | | | | | | | | | | | | | |
|--|-------------------|---------|---------------|-----------|-------|---------|-------------|--|--|--|--|-------------|--|------|
| ID | Company | Barcode | Address | City | Title | Name | First Name | | | | | | | |
| 34 | BERNABE | | | | | | | | | | | | | |
| 33 | MARKEM | | 9 RUE G... | | | | MARKEM | | | | | 2252121... | | |
| 32 | GENLAB | | TANE H... | | | | GENLAB | | | | | +441514... | | ENC |
| 31 | JOACHIM BAU... | | WAITEZ... | | | GERMANY | JOACHI... | | | | | +494082... | | JOA |
| 30 | TOREX | | VIA CA... | | | ITALY | TOREX | | | | | 059/808... | | TOR |
| 29 | MARIDT GMBH | | STUIFENS... | | | GERMANY | MARIDT ... | | | | | +49(0)7... | | MAI |
| 28 | FR JACOB SO... | | NIEDER... | | | GERMANY | FR JAC... | | | | | +495719... | | SAL |
| 27 | SIVAG | | AUMUHL... | | | NORWAY | SIVAG | | | | | +43(0)2... | | OFF |
| 26 | PRESTIGE CAR... | | 1 RUE R... | BORDEA... | | FRANCE | PRESTIG... | | | | | | | PRE |
| 25 | SCHAVETTI LA... | | VIALE D... | | | ITALY | SCHAVE... | | | | | 3901436... | | |
| 24 | FOX COOLING | | P.O.BO... | ACCRA | | GHANA | | | | | | +233(0)... | | SAL |
| 23 | GATIEN TECHN... | | ZONE IN... | | | | | | | | | 0233362... | | GTA |
| 22 | CASSEL | | 11 BIS R... | | | FRANCE | CASSEL | | | | | +33(0)5... | | INFC |
| 21 | FOOD MASTER... | | BENZSTR... | | | GERMANY | FOOD ... | | | | | 07141/9... | | INFC |
| 20 | GROSSERON | | ZAC HA... | | | FRANCE | GROSSE... | | | | | 33(0)240... | | INFC |
| 19 | AERZEN | | Z...I 10 A... | | | FRANCE | AERZEN | | | | | 0146741... | | AER |
| 18 | FREUDENBERG... | | 3 AVEN... | | | FRANCE | FREUDE... | | | | | +33(0)1... | | |
| 17 | PROBAT WERKE | | POSTFA... | | | GERMANY | PROBAT ... | | | | | +492822... | | S.W |
| 16 | AASTED APS | | BYGMA... | | | DENMARK | AASTED ... | | | | | +454434... | | MAI |
| 15 | WAM MAROC | | 259 ZI SU... | | | ITALY | WAM M... | | | | | +212523... | | |
| 14 | SAINT DIZIER E... | | RUE GA... | | | FRANCE | SAINT DI... | | | | | (33)3265... | | CC |

5.2 Suppliers tab buttons

| Button | Action |
|---------|---|
| Refresh | Refreshes the current view. |
| Export | Send all data to an Excel file XLS or XLSX or selected lines to CSV |
| eMail | Sends an eMail to the selected contact |
| New | Creates a new supplier |
| Edit | Modify the selected line |
| Quit | Exits application |

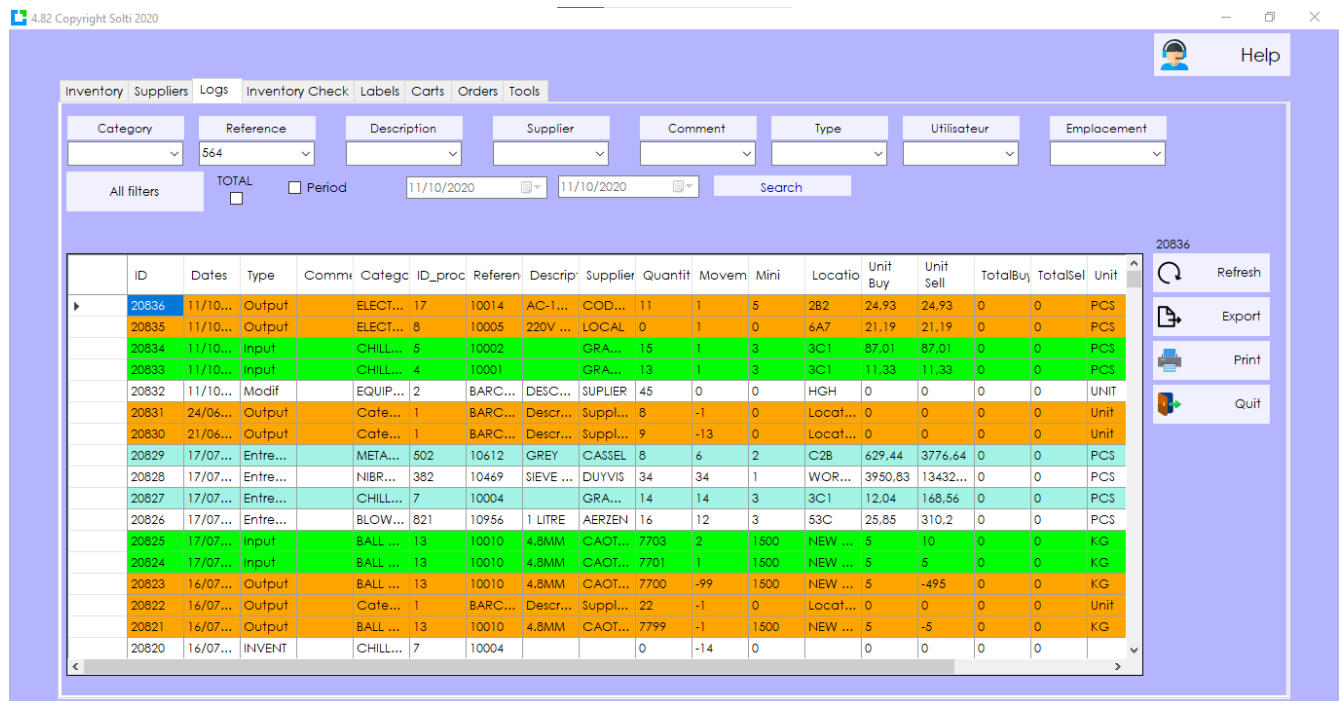
5.3 Supplier definition

| Field | Format | Description |
|------------|---------|--|
| ID | Integer | Identifier. Each product has a unique identifier given automatically by the database system and cannot be changed. Normally, you don't have to change it. Usually, Identifiers are given in chronological order. |
| Company | String | The full name of the company |
| Barcode | String | Used to identify the supplier with a barcode label |
| Address | String | To send letters and return material |
| Zip | Integer | Zip code |
| City | String | Location |
| Country | String | Country or state |
| Last Name | String | Family name of your main contact |
| First Name | String | First name of your main contact |
| Title | String | Main contact's job title |
| Tel1 | String | Main phone number |
| Tel2 | String | Phone number |
| Mail | String | eMail address |
| Fax | String | Fax |

6 Logs tab

6.1 Display

The logs' tab is used to keep track of any changes performed on the stock.



| ID | Dates | Type | Comm | Cate | ID_proc | Referen | Descrip | Supplier | Quantit | Movem | Mini | Locatio | Unit Buy | Unit Sell | TotalBuy | TotalSel | Unit |
|-------|----------|----------|----------|------|---------|-----------|----------|----------|---------|-------|----------|---------|----------|-----------|----------|----------|------|
| 20836 | 11/10... | Output | ELECT... | 17 | 10014 | AC-1... | COD... | 11 | 1 | 5 | 282 | 24.93 | 24.93 | 0 | 0 | PCS | |
| 20835 | 11/10... | Output | ELECT... | 8 | 10005 | 220V ... | LOCAL | 0 | 1 | 0 | 6A7 | 21.19 | 21.19 | 0 | 0 | PCS | |
| 20834 | 11/10... | Input | CHILL... | 5 | 10002 | | GRA... | 15 | 1 | 3 | 3C1 | 87.01 | 87.01 | 0 | 0 | PCS | |
| 20833 | 11/10... | Input | CHILL... | 4 | 10001 | | GRA... | 13 | 1 | 3 | 3C1 | 11.33 | 11.33 | 0 | 0 | PCS | |
| 20832 | 11/10... | Modif | EQUIP... | 2 | BARC... | DESC... | SUPLER | 45 | 0 | 0 | HGH | 0 | 0 | 0 | 0 | UNIT | |
| 20831 | 24/06... | Output | Cate... | 1 | BARC... | Descr... | Suppl... | 8 | -1 | 0 | Locat... | 0 | 0 | 0 | 0 | Unit | |
| 20830 | 21/06... | Output | Cate... | 1 | BARC... | Descr... | Suppl... | 9 | -13 | 0 | Locat... | 0 | 0 | 0 | 0 | Unit | |
| 20829 | 17/07... | Entre... | META... | 502 | 10612 | GREY | CASSEL | 8 | 6 | 2 | C2B | 629.44 | 3776.64 | 0 | 0 | PCS | |
| 20828 | 17/07... | Entre... | NIBR... | 382 | 10469 | SIEVE ... | DUYVIS | 34 | 34 | 1 | WOR... | 3950.83 | 13432... | 0 | 0 | PCS | |
| 20827 | 17/07... | Entre... | CHILL... | 7 | 10004 | | GRA... | 14 | 14 | 3 | 3C1 | 12.04 | 168.56 | 0 | 0 | PCS | |
| 20826 | 17/07... | Entre... | BLOW... | 821 | 10956 | 1 LITRE | AERZEN | 16 | 12 | 3 | 53C | 25.85 | 310.2 | 0 | 0 | PCS | |
| 20825 | 17/07... | Input | BALL ... | 13 | 10010 | 4.8MM | CAOT... | 7703 | 2 | 1500 | NEW ... | 5 | 10 | 0 | 0 | KG | |
| 20824 | 17/07... | Input | BALL ... | 13 | 10010 | 4.8MM | CAOT... | 7701 | 1 | 1500 | NEW ... | 5 | 5 | 0 | 0 | KG | |
| 20823 | 16/07... | Output | BALL ... | 13 | 10010 | 4.8MM | CAOT... | 7700 | -99 | 1500 | NEW ... | 5 | -495 | 0 | 0 | KG | |
| 20822 | 16/07... | Output | Cate... | 1 | BARC... | Descr... | Suppl... | 22 | -1 | 0 | Locat... | 0 | 0 | 0 | 0 | Unit | |
| 20821 | 16/07... | Output | BALL ... | 13 | 10010 | 4.8MM | CAOT... | 7799 | -1 | 1500 | NEW ... | 5 | -5 | 0 | 0 | KG | |
| 20820 | 16/07... | INVENT | CHILL... | 7 | 10004 | | | 0 | -14 | 0 | | 0 | 0 | 0 | 0 | | |

6.2 Log tab buttons

| Button | Action |
|---------|--|
| Refresh | Refreshes the current view. |
| Clear | Deletes all logs from database, after user confirmation. |
| Export | Sends displayed data to an Excel file |
| Print | Optional button to edit or print stock movement analyses |
| Modif | Optional button to edit the selected line |
| Quit | Exits application |

6.3 Log definition

We call 'movement' an operation that moves data into or out of stock. All movements are stored (logged) in the journal. Operations such as modifying and deleting an item are also stored.

| Field | Format | Description |
|-------------|---------|---|
| ID | Integer | Identifier. Each product has a unique identifier given automatically by the database system. It cannot be changed. Normally you don't have to change it. Usually, identifiers are displayed in chronological order. |
| Dates | String | Date and time of the operation |
| Type | String | Before = quantity before movement After = quantity after movement Input = products added to stock Output = products taken out of stock Modif = modification of product details |
| Comment | String | Comment eventually entered relating to the action |
| Category | Integer | Product category |
| ID_prod | Integer | Product ID |
| Reference | String | Product reference |
| Description | String | Product description |
| Supplier | String | Product supplier |
| Quantity | Decimal | Product quantity in stock |
| Movement | Decimal | Quantity moved |
| Mini | Decimal | Product minimum |
| Location | String | Location |
| UnitBuy | Decimal | Unitary buying price |
| TotalBuy | Decimal | Total buying price according to the movement quantity |
| UnitSell | Decimal | Unitary selling price |
| TotalSell | Decimal | Total selling price according to the movement quantity |
| Unit | String | Used to memorize packaging or storing conditions |
| User | String | Windows PC name or barcode user identifier |
| Project | String | Optional field when using destination projects |
| Client | String | Optional field when using destination clients |

7 Label printer tab

7.1 Display

This tab is used to design your own custom labels.



7.2 Log tab buttons

| Button | Action |
|---------------|---|
| Select | Opens the list of printers to use |
| Configuration | Opens the parameter file which contains a [ETIQUETTE] section that may need to be modified. Call us for more details. |
| Try | Prints one label |
| Print | Sends the specified number of labels to the printer |
| Create list | Generates a CSV file containing the text of the labels for all products |
| Print list | Prints the list from the previous file. The file can be modified as required. |
| Quit | Exits application |

7.3 Simple label settings

This chapter describes the setting for one label.



In this sample, we use EAN code. The label is made of 3 lines, from the top to the bottom. The text, which appears under the barcode is the barcode value.

In Etiquette.ini we have the following parameters:

```
[DATA]
NOMBRE=5           // Number of labels to print
TITRE=My Company   // Tittle for all labels

[ETIQUETTE]
CODE128=0          // Using code128
CODEEAN=8          // Using code EAN
HAUTEUR=20         // Height of barcode drawing
LARGEUR=60         // Width of barcode drawing
OFFSETX=10         // Horizontal shift for all printing
OFFSEY=10          // Vertical shift for all printing
X1=0               // Horizontal position the first line
Y1=0               // Vertical position of the first line
F1=12              // Height of the font of the first line
L1=20              // Maximum character length of the first line
X2=1               // Second line X
Y2=8               // Second line Y
F2=8B              // Second line height, 8 pixels, bold font
L2=20              // Second line length
X3=0               // Line 3 = Barcode drawing position
Y3=16              // Line 4 position, if any
X4=0               // Line 4 position, if any
Y4=16              // Line 4 position, if any
ZOOM=5             // Optional parameter to use for fixed scale barcodes
```

A unit is usually half a millimeter. It depends on your type of printer. There is an unlimited number of possibilities. You can always send us a drawing of the type of label that you desire.

Here is an example of a label using ROTATION=1



7.4 Multiple label printing

When using a classical A5 or A4 printer, you need adhesive paper and to use the **generate list** and **print list** buttons.

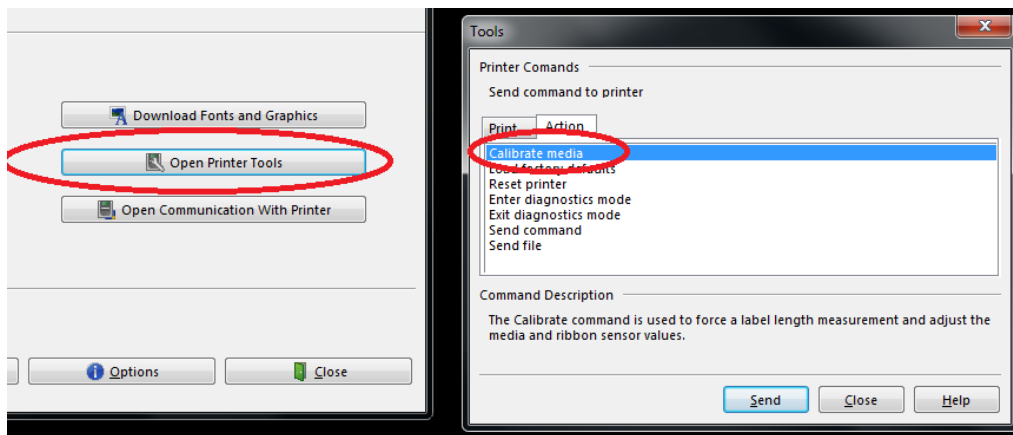
```
[ETIQUETTE]
PAS_HORIZONTAL=100      // Horizontal distance between two labels
PAS_VERTICAL=50         // Vertical distance between two labels
NB_HORIZONTAL=4         // Number of labels in a row
NB_VERTICAL=8           // Number of labels in a column
```

If you want to print a list with a single label printer, use the following setting:

```
[ETIQUETTE]
NB_HORIZONTAL=1
NB_VERTICAL=1
```

7.5 Zebra printers

Zebra printers are the best. By default, the EPL driver is installed and you have to go to the printer setting panel in your window to select the advanced settings and change the driver to the non EPL driver. Sometimes, to adjust the setting of the printer you have to install the Zebra printer utility.



The calibrate media function is very powerful. If it does not work, please visit [Zebra's website](http://zebra.com).

7.6 Code 128 labels

The most powerful barcode code is CODE128. It enables letters, uppercases and low cases, as well as many symbols. Many formats are already integrated into SIM.

Pre-defined SIM labels formats

You can select one of these formats with the parameter CODE128=XXX



This label example was created long time ago. If you require specific labels, please let us know.

8 Networking and user's management

8.1 Sharing SIM

As SIM is using .Net Microsoft technologies, it is very simple to share your application through any kind of network. To access SIM interface from different PCs, you need to share the folder on a shared drive.

The shared drive can be a Windows Folder, A Windows server or some cloud storage like Dropbox or Google Drive.

8.2 Deployment

You need to verify that the target folder is sharable: each PC must be able to create or delete a text file on the folder. After this check, cut the SIM folder to paste it on this new location. The best is to have a folder named SOLTl containing all Solti Files, and one folder named SIM with the current version you are using. Do not hesitate to make copies of SIM as SIM – Copy 1, Copy 2... into the SOLTl folder.

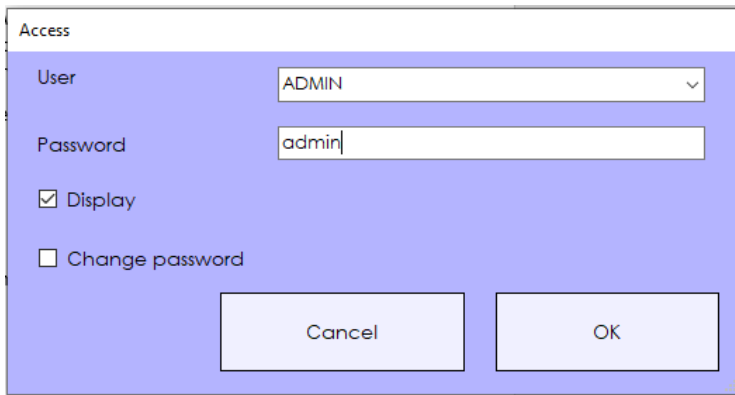
Each PC that want to run SIM must create a shortcut to SIM.exe Application and paste it on his desktop or task bar.

8.3 User's management

With the parameter DIVER LOGIN 1 in your GAM.ini file each time you start SIM you will have to enter a login name and a password.

| | | | |
|-----------|----------|-----------|--|
| ETIQUETTE | Y3 | 16 | |
| JOURNAL | OPTION | 2 | |
| PRODUITS | COLONNE2 | CodeBarre | |
| PRODUITS | REF1 | CodeBarre | |
| DIVERS | LOGIN | 1 | SIM asks for a name and password |
| DIVERS | LOGOUT | 300 | SIM automatically closes after 300 seconds = 5 minutes |
| | | | |

The LOGOUT parameter sets the duration of a session, so that SIM closes automatically to prevent someone to use SIM on someone else's computer.



Access

User: ADMIN

Password: admin

☒ Display

☐ Change password

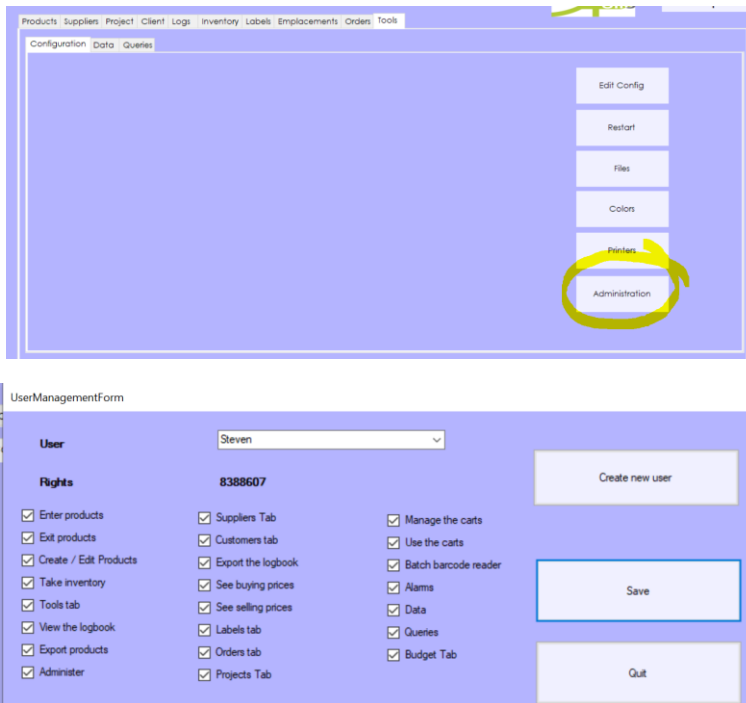
Cancel OK

From the login form, after having typed the right password, you can change for a new one.

8.4 Administrator

Each user has now a profile. A profile is a set of functions that are accessible or not. The users with the ADMIN right can set the rights of other users from the ADMIN form.

You find the ADMIN form in TOOLS/CONFIGURATION/ADMINISTRATION



Products Suppliers Project Client Logs Inventory Labels Emplacements Orders Tools

Configuration Data Queries

Edit Config

Restart

Files

Colors

Printers

Administration

UserManagementForm

User: Steven

Rights: 8388607

Create new user

Save

Quit

| | | |
|--|--|--|
| <input checked="" type="checkbox"/> Enter products | <input checked="" type="checkbox"/> Suppliers Tab | <input checked="" type="checkbox"/> Manage the carts |
| <input checked="" type="checkbox"/> Exit products | <input checked="" type="checkbox"/> Customers tab | <input checked="" type="checkbox"/> Use the carts |
| <input checked="" type="checkbox"/> Create / Edit Products | <input checked="" type="checkbox"/> Export the logbook | <input checked="" type="checkbox"/> Batch barcode reader |
| <input checked="" type="checkbox"/> Take inventory | <input checked="" type="checkbox"/> See buying prices | <input checked="" type="checkbox"/> Alarms |
| <input checked="" type="checkbox"/> Tools tab | <input checked="" type="checkbox"/> See selling prices | <input checked="" type="checkbox"/> Data |
| <input checked="" type="checkbox"/> View the logbook | <input checked="" type="checkbox"/> Labels tab | <input checked="" type="checkbox"/> Queries |
| <input checked="" type="checkbox"/> Export products | <input checked="" type="checkbox"/> Orders tab | <input checked="" type="checkbox"/> Budget Tab |
| <input checked="" type="checkbox"/> Administer | <input checked="" type="checkbox"/> Projects Tab | |

9 Inventory Tab

The inventory tab is independent of general stock management. It is dedicated to inventory operations performed on ab

9.1 Display

The inventory tab is independent of general stock management. It is dedicated to inventory operations performed on specific occasions to check if the theoretical stock, in the products tab, really matches what can be seen in your warehouse. In order to check, this specific tab enables the following operations:

- To fill a list of products with theoretical quantities
- To enable the user to add actual quantities
- To display differences
- To update stock panel only for quantities that have been checked
- Quantities that have not been checked remain unchanged in the product tab

GSM v2.259K (C) Copyright Solti 2015

Products

Suppliers

Transaction

Bikes

Logs

Inventory

Labels

Tools

Family

Référence

Location

Designation

| | Id | Family | Reference | Designation | Location | Quantity | Real | Diff | |
|--|----|---------------|------------|-------------------------------|----------|----------|------|------|--|
| | 1 | ROYAL ENFIELD | TSM002/S | T Shirt Made Like A Gun Gr... | BOX 4 | 2 | -1 | | |
| | 2 | ROYAL ENFIELD | TSM002/M | T Shirt Made Like A Gun Gr... | BOX 4 | 0 | -1 | | |
| | 3 | ROYAL ENFIELD | TSM002/L | T Shirt Made Like A Gun Gr... | BOX 4 | 6 | -1 | | |
| | 4 | ROYAL ENFIELD | TSM002/XL | T Shirt Made Like A Gun Gr... | BOX 4 | 0 | -1 | | |
| | 5 | ROYAL ENFIELD | TSM002/XXL | T Shirt Made Like A Gun Gr... | BOX 4 | 0 | -1 | | |
| | 6 | ROYAL ENFIELD | TSM001/S | T Shirt Made Like A Gun BL... | BOX 4 | 2 | 2 | 0 | |
| | 7 | ROYAL ENFIELD | TSM001/M | T Shirt Made Like A Gun BL... | BOX 4 | 0 | -1 | | |
| | 8 | ROYAL ENFIELD | TSM001/L | T Shirt Made Like A Gun BL... | BOX 4 | 0 | -1 | | |
| | 9 | ROYAL ENFIELD | TSM001/XL | T Shirt Made Like A Gun BL... | BOX 4 | 2 | 3 | 1 | |
| | 10 | ROYAL ENFIELD | TSM001/XXL | T Shirt Made Like A Gun BL... | BOX 4 | 0 | 2 | 2 | |
| | 11 | ROYAL ENFIELD | PRE001/S | Polo Enfield White MLG | BOX 4 | 0 | 4 | 4 | |
| | 12 | ROYAL ENFIELD | PRE001/M | Polo Enfield White MLG | BOX 4 | 18 | 0 | -18 | |
| | 13 | ROYAL ENFIELD | PRE002/L | Polo Enfield White RE | BOX 4 | 0 | 0 | 0 | |
| | 14 | ROYAL ENFIELD | PRE001/XL | Polo Enfield White MLG | BOX 4 | 0 | 4 | 4 | |
| | 15 | ROYAL ENFIELD | PRE001/XXL | Polo Enfield White MLG | BOX 4 | 0 | 5 | 5 | |
| | 16 | ROYAL ENFIELD | BRE001 | Buff Reflective | BOX 4 | 1 | 0 | -1 | |
| | 17 | ROYAL ENFIELD | BRE002 | Buff Original | BOX 4 | 3 | -1 | | |
| | 18 | ROYAL ENFIELD | JRE001/S | Leather Jacket RE | BOX 3 | 3 | -1 | | |
| | 19 | ROYAL ENFIELD | JRE001/M | Leather Jacket RE | BOX 3 | 2 | -1 | | |
| | 20 | ROYAL ENFIELD | JRE001/L | Leather Jacket RE | BOX 3 | 1 | -1 | | |
| | 21 | ROYAL ENFIELD | JRE001/XL | Leather Jacket RE | BOX 3 | 1 | -1 | | |
| | 22 | ROYAL ENFIELD | JRE001/XXL | Leather Jacket RE | BOX 3 | 0 | -1 | | |

Help

Refresh

New

Export

Clear

Save

Quit

9.2 Inventory definition

In the inventory list, some information concerning all the products of the stock's tab is duplicated, completed by two columns specific to inventory.

| Field | Format | Description |
|------------|---------|--|
| ID | Integer | Product identifier |
| Quantity | Decimal | Theoretical quantity in stock, from product's tab |
| Real | Decimal | Actual quantity checked by user |
| Difference | Decimal | Automatically updated difference. Appears in red if actual stock is lower than theoretical, yellow if actual is higher and not colored if equal. |

9.3 Inventory tab buttons

| Button | Action |
|---------|--|
| Help | Opens the web browser on SIM web pages. |
| Refresh | Refreshes the current view. |
| Clear | Deletes all inventory data. |
| Export | Sends displayed data to an Excel file |
| Save | Updates stock quantities according to user's actual quantities |
| Save | Updates stock according to user's real/actual quantities |
| New | Initializes the inventory product list from stock's information. Makes sure previous data have been saved. |
| Quit | Exits application |

10 Assemblies

Managing simple items is the first step. Sometimes, you need to group things together:

- Incoming goods are usually grouped in packs of N pieces
- Manufacturers have to assemble any parts to make one new object
- When you deliver a product, you sometimes need to joint a user manual, a set of accessories
- etc.

To make your process easier, SIM has the possibility to attach to one reference a list of components.

Cooking example of assembly: A cake is made of (1kg flour, 100g butter, 200g sugar, 3 eggs)

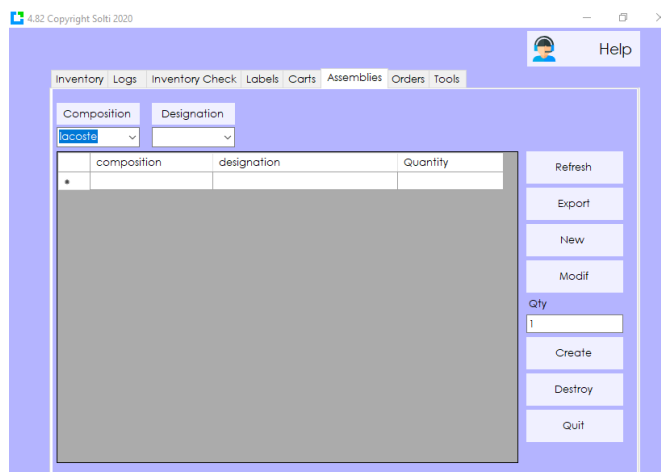
We talk about composition for the group of items, and components for items. Compositions and components are both SIM references with the full features of a reference. We just connect them with a link. A component can have components, but the assembly can be executed only step one step, one level at a time.

10.1 Tutorial

For this tutorial, we will use the example of a bicycle. We have all required parts in stock as described here.

| ID | Category | Reference | Description | Quantity | Alarm | UnitBuy |
|----|----------|-----------|--------------------------|----------|-------|---------|
| 1 | BICYCLE | 1000 | Saddle men pure leather | 100 | 0 | 50 |
| 2 | BICYCLE | 1002 | Handlebar standard | 50 | 0 | 20 |
| 3 | BICYCLE | 1003 | Front Wheel | 0 | 0 | 150 |
| 4 | BICYCLE | 1004 | Back Wheel | 40 | 0 | 160 |
| 5 | BICYCLE | 2000 | Complete bicycle for men | 0 | 0 | 0 |

Here is the Assemblies tab



| Button | Action |
|-----------------------------------|---|
| Refresh Export New Modif | We find usual buttons |
| Qty | Number of compositions to create or destroy |
| Create | Creates composition from components |
| Destroy | De-assemble composition and add components to stock |

10.2 Define an assembly

With the Create button you can define a composition. Select the assembly name from existing product.

Select the components and the required quantity. Here, all quantities are 1.

Compositions

Composition

2000

Elements

Family

BICYCLE

Reference

1000

Designation

Saddle men pure leather

Quantity

1

| | Component | Quantity | Designation | Unit |
|---|-----------|----------|-------------------------|------|
| ▶ | 1003 | 1 | Front Wheel | |
| | 1004 | 1 | Back Wheel | |
| | 1002 | 1 | Handlebar standard | |
| | 1000 | 1 | Saddle men pure leather | |
| * | | | | |

You can select components from PRODUCTS using line selection and Ctrl-click

Add
Delete

A Price button is used to calculate and update the assembly UnitBuy price.

10.3 Make an assembly

Making is different from creating. Making is a simple job of assembling what has been planned.

Select the quantity to build and click CREATE.

| composition | designation | Quantity |
|-------------|--------------------------|----------|
| ▶ 2000 | Complete bicycle for men | 0 |
| * | | |

You have created 4 assemblies of 2000
OK

Refresh
Export
New
Modif
Qty
4
Create
Destroy
Quit

The number of assemblies in stock will be updated in this screen and in the product inventory tab.

10.4 Result of an assembly

In the Log tab you can see that compositions have been added and components have been removed.

| Type | Comment | Category | Reference | Description | Quantity | Movement |
|------|---------|----------|-----------|--------------------------|----------|----------|
| EOF | COMPO | BICYCLE | 2000 | Complete bicycle for men | 4 | 4 |
| SOF | COMPO | BICYCLE | 1000 | Saddle men pure leather | 96 | -4 |
| SOF | COMPO | BICYCLE | 1002 | Handlebar standard | 46 | -4 |
| SOF | COMPO | BICYCLE | 1004 | Back Wheel | 36 | -4 |
| SOF | COMPO | BICYCLE | 1003 | Front Wheel | -4 | -4 |

Type EOF means Entry of composition (Entrée de fabrication)

Type SOF means Output of components (Sortie de fabrication)

10.5 Destroying an assembly

The same process can be used backward: a bicycle can be exploded into separated parts when needed. A most frequent usage of “destruction” is to receive one unit of a box of N parts, that you expand to N components when the box is opened and removed from stock.



10.6 Manufacturing

The possibilities are unlimited. SIM has an option to organize assemblies in a timetable. In the real world, making an assembly can take days. SIM can manage that and help you to plan your production. Just ask.

11 Tools tab

11.1 Display

The tool tab is separated into two sub-tabs. Depending on the option that has been chosen, you can have more sub-tabs and more buttons in each sub-tab. Here we will describe the basics.

11.2 Tools Configuration tab



11.3 Configuration tab buttons

| Button | Action |
|---------|---|
| Edit | Opens a text file (GSM.ini) containing all parameters to customize SIM. Parameters are grouped into [SECTIONS]. There is one parameter name and one value per line. |
| Restart | Restarts the application after a parameter change. |
| Clear | Deletes all inventory data, after user confirmation. |
| Files | Opens a file browser window to SIM folder. |
| Colors | You can change the color of SIM windows and buttons. |

11.4 Parameters

The power of SIM comes from about one hundred parameters that you can easily change to fit your needs. These parameters are contained in a text file GSM.ini that can be modified using NotPad. It is better for a beginner to use the EDIT button which opens the following window:

GSM.ini

Here you can modify parameters or add one at the bottom of the list.

| Section | Parameter | Value | Comment |
|-----------|-----------|-----------------|----------------------------|
| ETIQUETTE | Y1 | 0 | |
| ETIQUETTE | X5 | 0 | |
| ETIQUETTE | ROTATION | 0 | |
| ETIQUETTE | X4 | 56 | Please do not change! |
| ETIQUETTE | CODE128 | 2 | |
| JOURNAL | COLONNE10 | Brand | Comment |
| JOURNAL | COLONNE9 | Destination | |
| PRODUITS | REF1 | Barcode | |
| PRODUITS | COLONNE4 | 4-Immobiliz... | |
| PRODUITS | REF4 | Destination | Changed by DAVID 2019/9/11 |
| PRODUITS | REF2 | Brand | |
| PRODUITS | COLONNE5 | 5-Destination | |
| PRODUITS | COLONNE3 | 3-Brand | |
| PRODUITS | COLONNE2 | 2-Barcode | |
| PRODUITS | REF3 | Immobilizati... | |
| | | | |

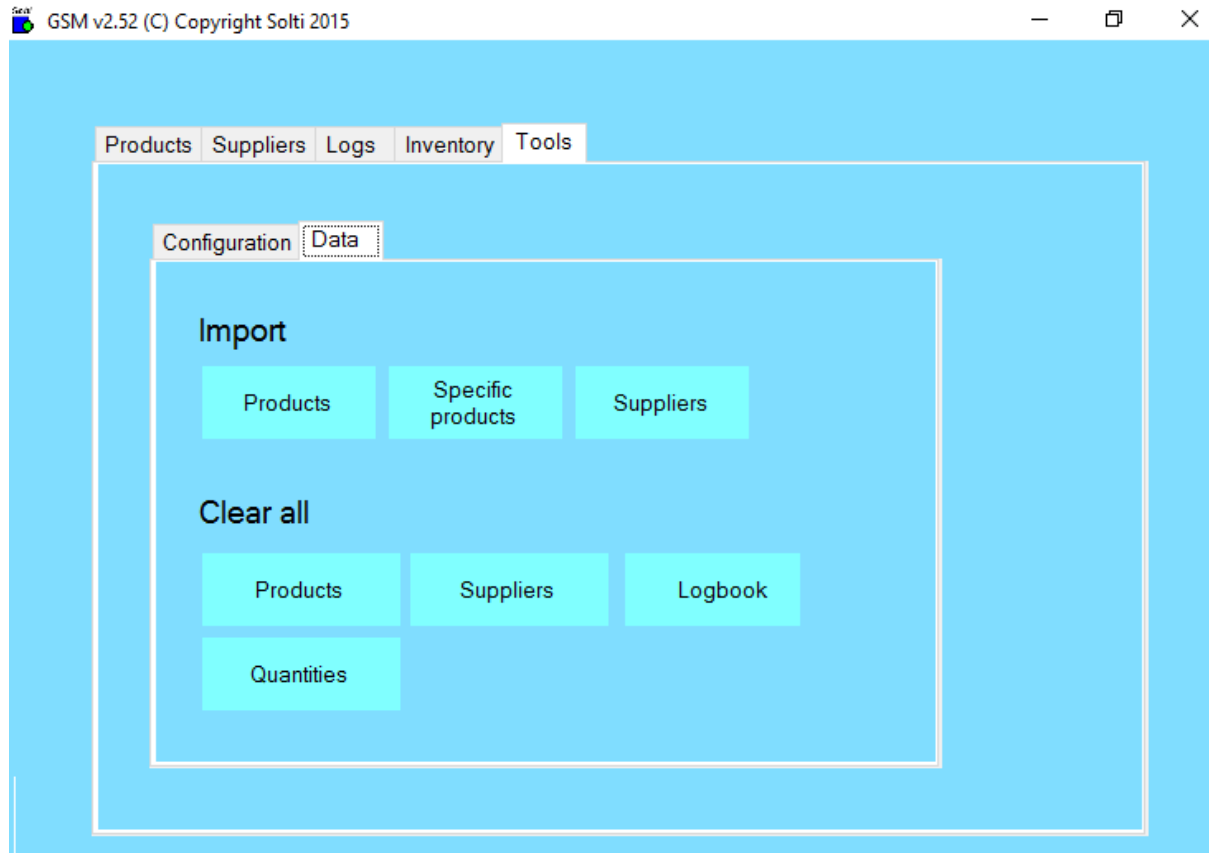
Cancel

Save and exit

The left column is the parameter category. The next one is the name of the parameter. The next one contains the value of the parameter. The last columns is not used by SIM, you can store any comment in it.

The very last line of the table is empty you can add a parameter just by typing into it.

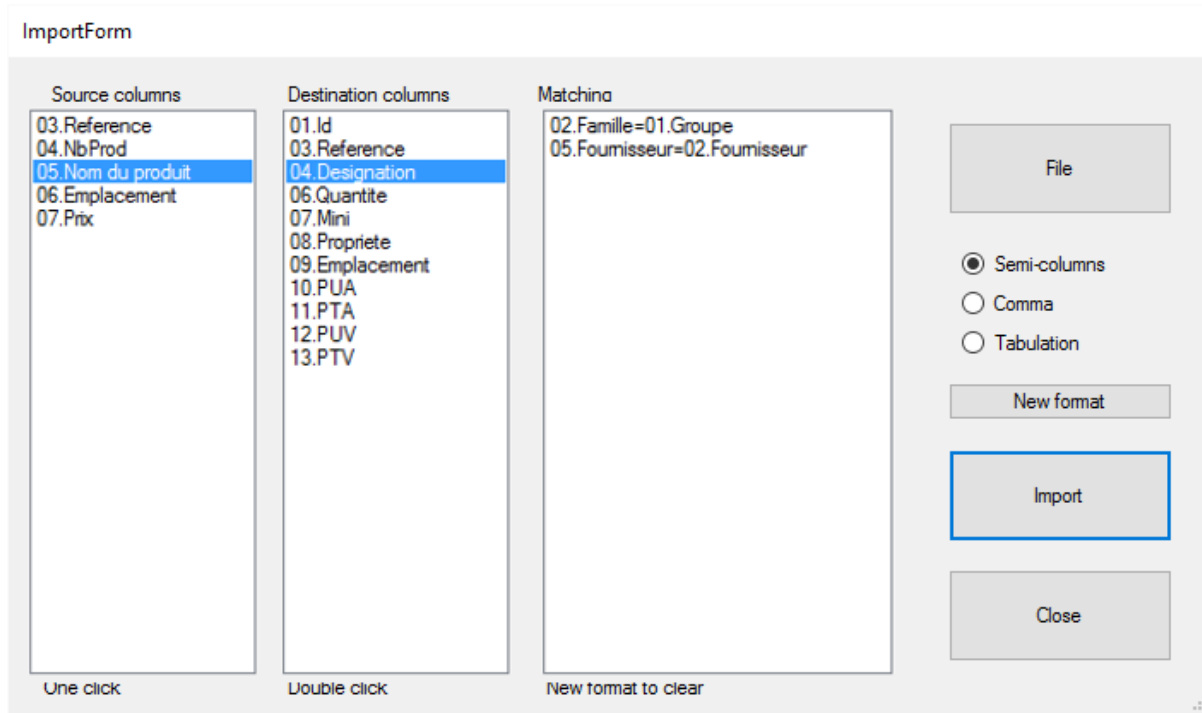
11.5 Tools Data tab



11.6 Data tab buttons

| Button | Action |
|-------------------|---|
| Import | |
| Products | Lets you select a CSV file (text with columns separators) to import product data, according to SIM export format. |
| Specific Products | Lets you select a CSV files to import product data, under any format as explained hereafter. |
| Suppliers | Lets you select a CSV file containing the supplier's description. |
| Clear all | |
| Products | Removes all product descriptions and quantities in the database. Dangerous! |
| Suppliers | Removes all suppliers from database. |
| Logbook | Removes all logs from database. |
| Quantities | Sets all product quantities to zero. Dangerous! |

Here is the explanation for **Specific Products Import**:



The screenshot shows the 'ImportForm' interface with three main sections: 'Source columns', 'Destination columns', and 'Matching'. The 'Source columns' list includes 03.Reference, 04.NbProd, 05.Nom du produit (highlighted), 06.Emplacement, and 07.Prix. The 'Destination columns' list includes 01.Id, 03.Reference, 04.Designation (highlighted), 06.Quantite, 07.Mini, 08.Propriete, 09.Emplacement, 10.PUA, 11.PTA, 12.PUV, and 13.PTV. The 'Matching' section shows two rules: '02.Famille=01.Groupe' and '05.Fournisseur=02.Fournisseur'. On the right, there are buttons for 'File', 'Semi-columns' (selected), 'Comma', 'Tabulation', 'New format', 'Import' (highlighted with a blue border), and 'Close'. At the bottom, there are instructions: 'One click' for source columns, 'Double click' for destination columns, and 'New format to clear' for the matching section.

1. Select the type of your file separator: Semicolon, Comma or Tab.
2. Open your file by clicking the 'File' button
3. Column headers of your file are displayed next to the columns. For example, as you can see in the image above, by clicking once on the name of the product in the source column on the left and then clicking twice on designation in the destination column, you can define how data will be copied. Here the SIM designation column will take the Group column values of your file. Do this for all columns that are required by SIM. All columns are not required.
4. Press the Import button.

When you return to this screen, SIM will offer to re-use the latest format. In order to delete a line of the format, you must double-click on it.

CAUTION: Importing prices does not work if your columns contain \$ or another currency sign. We need the original cells to be in "number" format.

12 Customize SIM

12.1 Customize tab names

SIM data base is organized in tabs to make simple the product management fo most companies. Sometimes it may be necessary to change the name of the tabs. Here is how to proceed:

1. Go to TOOLS/SETTINGS/EDIT
2. On the left, enter the name of the tab you want to change
3. In the middle, enter the keyword PAGE
4. Int the right column, enter the new name of the tab

GSM.ini

Here you can modify parameters or add one at the bottom of the list.

| Section | Parameter | Value | Comm |
|--------------|-----------|----------|------|
| ETIQUETTE | NOMBRE | 3 | |
| ETIQUETTE | OFFSETX | 0 | |
| ETIQUETTE | OFFSEY | 0 | |
| PRODUITS | PAGE | Catalog | |
| Fournisseurs | PAGE | Provider | |

12.2 Customize column names

The SIM data base is designed to be universal. The title of the columns: Category, reference, quantity, supplier, etc. have been chosen as a compromise to satisfy most the users. Of course you may want to change the names. Here is how to proceed.

1. Go to TOOLS/SETTINGS/EDIT
2. On the left, enter the name of the tab you want to change
3. In the middle, enter the name of the original name of the columns, preceded by "COL_".
The name of the column is usually a French name that you can see typing "SELECT * FROM t_produits" with SQL option.
4. In the right columns, enter the new name.

GSM.ini

Here you can modify parameters or add one at the bottom of the list.

| Section | Parameter | Value | Comment |
|-----------|---------------|------------|---------|
| PRODUITS | COL_REFERENCE | Barcode | |
| PRODUITS | COL_FAMILLE | Group | |
| PRODUITS | COL_PROPRIETE | Date | |
| PRODUITS | COL_REF2 | Supl. Ref. | |
| ETIQUETTE | OFFSEY | 0 | |
| ETIQUETTE | X3 | 0 | |

To complete the job of renaming, you need to know the original name of the columns listed here:

Product table t_produits

ID, Famille, Reference, Designation, Fournisseur, Quantite, Mini, Propriete, Emplacement, PUA, PTA, PUV, PTV

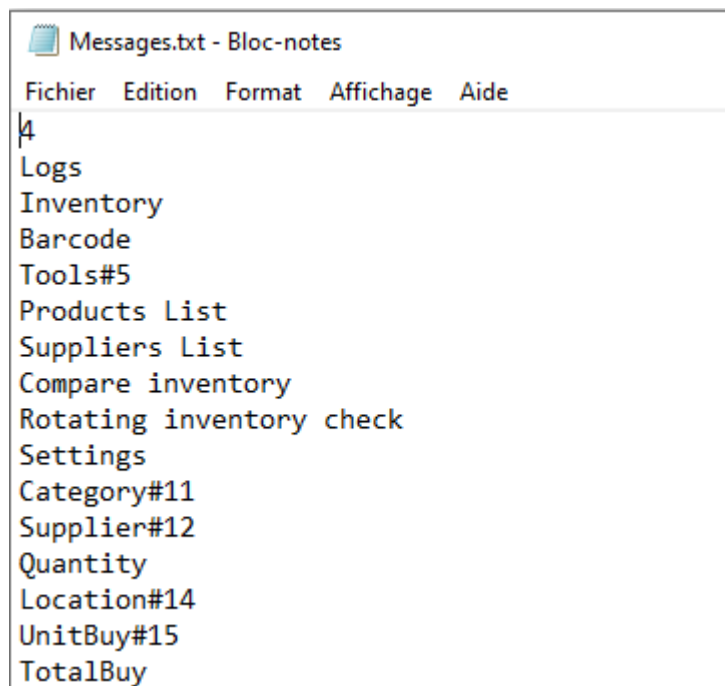
Logbook table is t_journal

Id,Dates,Type,Commentaire,Famille,ID_prod,Reference,Designation,Fournisseur,Quantite,Mouvement,Mini,Emplacement,PUA,PTA,PUV,PTV,Utilisateur

12.3 Customize all texts

When you want more changes in SIM, you can directly modify the text in the file messages.txt. Each line of this file is a text that you can find in SIM. You can change a line, but you should never insert or remove a line, as the line number is used by SIM to display texts.

The symbol # can be used to add a free comment that will be ignored by SIM



```

Messages.txt - Bloc-notes
Fichier  Edition  Format  Affichage  Aide
4
Logs
Inventory
Barcode
Tools#5
Products List
Suppliers List
Compare inventory
Rotating inventory check
Settings
Category#11
Supplier#12
Quantity
Location#14
UnitBuy#15
TotalBuy
  
```

The SIM data base is designed to be universal. The title of the columns: Category, reference, quantity,

13 How to do

13.1 Switching from the free to licensed version

The SIM license allows you to add unlimited products. When the software asks for a license code, just enter it. The software asks you to restart it, and at the next launch, you will have the full version. To obtain a license number before it reaches 40 references, simply send us the serial number displayed when you click the HELP button.

If the PC on which you wish to obtain a license is not the same, please backup the GSM.mdb (database) file which contains your data, compatible with all versions of SIM.

13.2 Import data

To import existing data, please these steps below carefully:

1. In the PRODUCTS tab use the EXPORT button to get a CSV file
2. In this file, manually add or copy and paste your data
3. In the TOOLS / DATA tab, use the DELETE PRODUCTS button
4. On the TOOLS / DATA tab, use the IMPORT PRODUCTS button to embed your CSV file

The products are identified in the order of the CSV file. If you are having difficulties, start with the exported CSV file without changing anything ... If the problem still persists; please send us the file. To save your data in Excel as .CSV format, please choose the "Save As" ".CSV Separator Semicolon". Caution: Some Excel configurations use the tab or comma as a separator. Note: When opening the file with Notepad / BlocNote please remove any strange characters.

13.3 Add an option to SIM

To add additional options that are available with SIM, please contact us. In some cases, some data will be modified (adding columns or tables). It will be necessary to export your data, modify the file and then import your data. If you notice errors during an operation, it is probably because the format of the log has also changed, you will have to purge it in the TOOLS / DATA menu.

13.4 Networking

SIM is a Microsoft .Net application, and can be deployed on virtually any type of infrastructure. Thus, multi-user operations are possible in all situations.

13.5 Intranet

If you have a Windows share (Private or Public Group), you must move the SIM folder, containing all files and subfolders to a shared folder. Caution, you will need editing rights! Using SIM on a local network, the response times compared to an installation on your PC are not noticeable.

If you have VPN or a Windows server, install SIM on this server. The Remote Desktop application available on Windows, Apple and even mobile phones will allow you to work remotely.

If you do not have a specific infrastructure, you can install Dropbox on each of your PCs and place the SIM folder on a Dropbox shared folder. The operation is perfect for all workstations that stay connected. You may work offline when using SIM, however single workstation usage is the best option. More than one workstation in offline mode may cause issues.

13.6 Remote base

SIM is a very powerful software and user-friendly because it makes the best use of technology available on your PC. Unlike WEB solutions that are restricted by language, especially restricted by connection speeds that sometimes make it almost impossible to use because of the load times of each page. The advantage of WEB solutions is smart phones access.

To benefit from the advantages of a WEB database accessible by HTML pages, SIM allows the use of a remote MYSQL database. Just set your SIM as for example:

[VARIOUS]

Connection1 = SERVER = 217182207237; DATABASE = GSM01; UID = Thomas; PASSWORD =; PORT = 3306

SOLTI can offer turnkey packages and specific WEB developments to complement your smartphone access.

14 Advanced features

Since SIM is an open application based on standards such as Microsoft .NET, Access, SQL, Excel, there are many options to suit your needs. Please contact us for more information.

14.1 Parameters

SIM parameters are stored in the text file GSM.ini. All parameters are gathered under the [divers] section. You only get a detailed description of the parameters once you have purchased a full licensed version.

The only thing you need to know is that parameters are grouped into sections with names in brackets:

[DIVERS]

[PRODUITS]

Within every section, each line contains one parameter, along with its name and value.

LICENCE1=23445

If you buy a license, you may have to edit and modify this file; we will provide support if necessary.

----- End -----

Your contact:

Mail: contact@smart-inventory-manager.com

Site: www.smart-inventory-manager.com